

PROJECT BY

GRREEN TRIVENI

Ashiana



We invite you to live outdoors and  
LIVE THE GARDEN LIFESTYLE



Ashiana GREENS

PROJECT BY

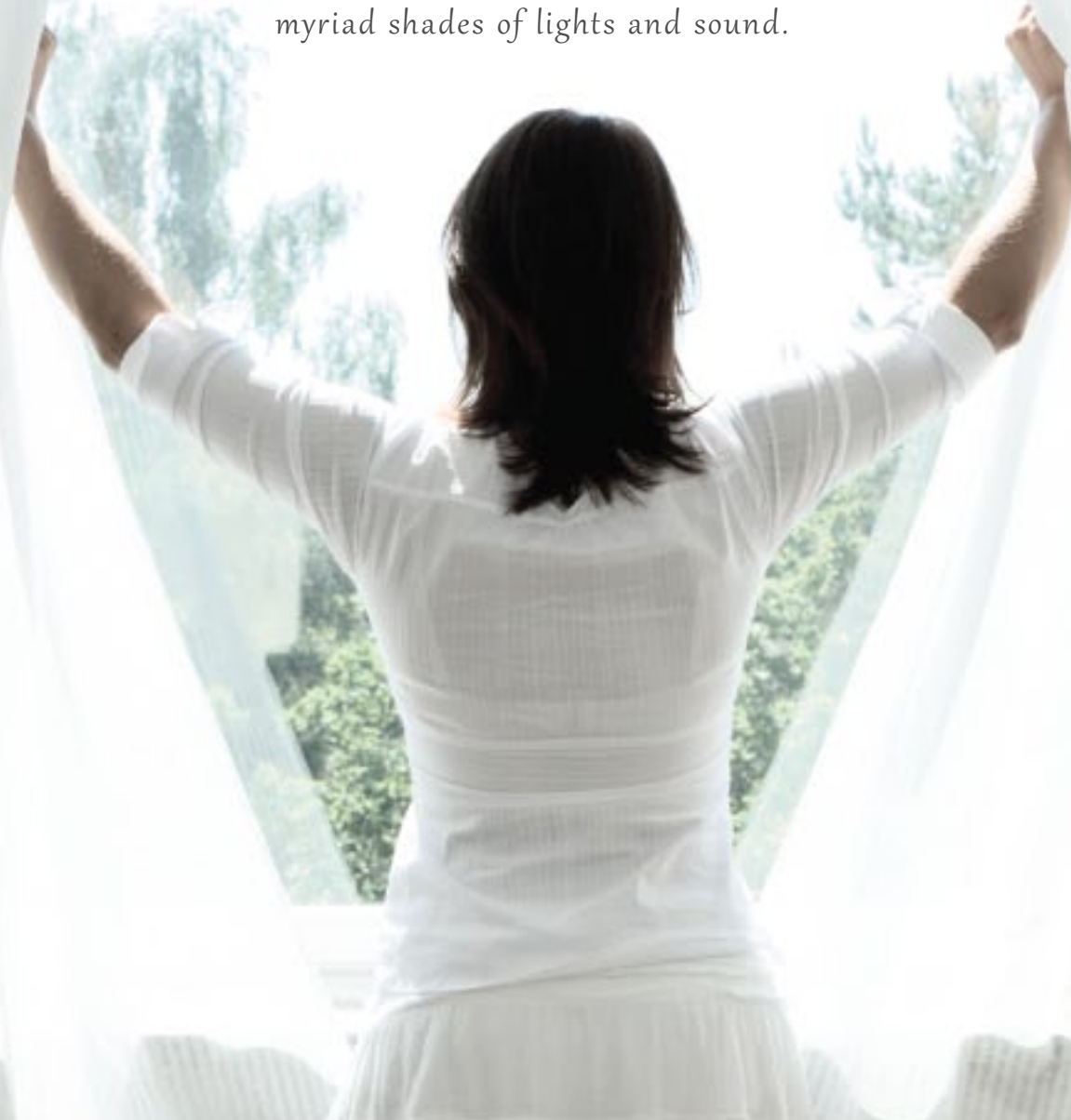
GRREEN TRIVENI Ashiana

APARTMENTS

*ASHIANA GREENS is designed to make your surroundings a part of your home.*

---

*With beautifully landscaped gardens that invite you to live outdoors. Amongst flowers and myriad shades of lights and sound.*





GARDEN LIFESTYLE

# BEAUTIFUL HOMES SET IN A GARDEN

WITHIN A SECURED GATED COMPLEX



Artistic Impression

**Ashiana**

Homes for every Dream

ASHIANA HOMES IS A TRUSTED REAL ESTATE BRAND IN DELHI NCR. ESTABLISHED FOR OVER 25 YEARS, IT HAS A PROVEN TRACK RECORD OF DELIVERING QUALITY HOMES AND TURNING DREAMS INTO REALITIES FOR MORE THAN 3,000 FAMILIES. INVESTMENTS MADE BY CUSTOMERS IN ASHIANA HOMES ARE ABSOLUTELY SAFE.

# THE GARDEN LIFESTYLE HOMES



JUST THE SORT YOU ALWAYS WANTED.

WITH WIDE, OPEN SPACES THAT PROMISE FREEDOM AND SAFETY,  
NESTLED IN ITS MODERN ENVIRONMENT. ONE THAT OFFERS  
THE BEST IN COMFORT LIVING.







## 2 & 3-BEDROOM APARTMENTS

---

*Lush green outdoors and modern amenities blend harmoniously with the Apartment block to create an extraordinary world.*





HOMES IN ASHIANA GREENS COMES WITH A  
**BEAUTIFULLY MANICURED  
CENTRAL LAWN**



Artistic Impression

*Broad tree-lined walkways, water-bodies and flower beds. So you can call your home the best place on earth.*

- SPACIOUS HOMES  
with well ventilated Kitchen
- Facility for  
POWER BACKUP
- Multi-level  
SECURITY SYSTEM
- INTERCOM  
facility
- FILTERED DRINKING  
water supply
- Hassle free  
FACILITY MANAGEMENT



A HOME YOU'D LOVE COMING TO.





RECREATIONAL AND OUTDOOR SPORTS FACILITIES INCLUDE  
CRICKET PRACTICE NET WITH BOWLING MACHINE,  
BADMINTON COURT, JOGGING TRACK, AMPHITHEATRE AND  
A DEDICATED PLAY AREA FOR KIDS







# HEALTHY LIVING

## WITH WELL-VENTILATED HOMES

*Ashiana Greens layout opens up the spaces around homes to offer you the best view with maximum air and light circulation.*



ASHIANA  
ADVANTAGE

FOR US WHAT IS OUTSIDE IS AS IMPORTANT AS WHAT IS INSIDE. OUR HOUSING COMPLEXES ARE WIDE, OPEN AND SPACED OUT WITH PLENTY OF GREENERY AND MANICURED PARKS.





ASHIANA GREENS BRINGS TO YOU  
EVERYTHING THAT THE MODERN LIFESTYLE HAS TO OFFER.



ALL SET AMONG THE MOST PRISTINE ENVIRONMENT.



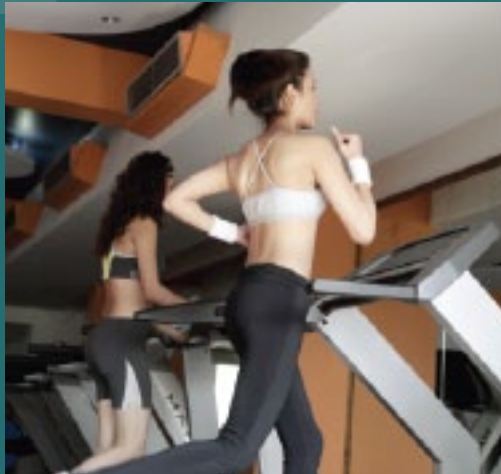
# *Club Anandam*

---





# COME HOME TO 'UNWIND'



YOUR OWN SPACE WITH A  
SWIMMING POOL & SIT-OUT DECK, GYM, GAMES ROOM  
POOL TABLE, TABLE TENNIS, SENIOR CITIZEN LOUNGE  
TODDLER'S AREA AND A PARTY HALL

ASHIANA  
ADVANTAGE

WE BUILD MORE THAN JUST BEAUTIFUL RESIDENTIAL COMPLEXES. WE  
BUILD COMMUNITIES WHERE NEIGHBOURS BECOME LIFELONG FRIENDS.



Artistic Impression

## SWIMMING POOL WITH A SIT-OUT DECK











Artistic Impression







AT ASHIANA GREENS  
A LIFE DESERVES TO BE LIVED.  
AND LIVED WELL.

---



ASHIANA  
ADVANTAGE

OUR URBAN DESIGN SKILLS AND EXPERTISE IN SITE LAYOUT PLANNING AND DEVELOPMENT IS UNMATCHED. WITHIN THE FRAMEWORK OF GOVERNMENT BYE-LAWS WE CREATE OPTIMUM SPATIAL PLANS.

Artistic Impression

# ASSURED SAFETY OF INVESTMENT

---

THE BEST LIVING SPACES NEED THE BEST  
FACILITY MANAGEMENT  
& MAINTENANCE

---

ASHIANA GREENS offers you hassle free living.  
That's because a trained team is working  
behind the scenes to take care of you.

24 x 7



OUTDOOR CLEANING



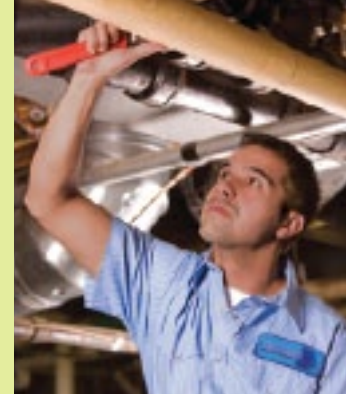
CLUB MANAGEMENT



STREET LIGHTING



LANDSCAPING



MAINTENANCE OF EQUIPMENTS  
LIKE GENERATOR,  
WATER FILTRATION PUMP  
AND OTHER  
ELECTROMECHANICAL  
EQUIPMENTS

---



SEWAGE TREATMENT PLANT



RAINWATER HARVESTING

  
**GREENCITY**  
MANAGEMENT PVT. LTD.

---

A SUBSIDIARY OF ASHIANA HOMES PVT. LTD.  
SPECIALISING IN RESIDENTIAL FACILITY MANAGEMENT



ASHIANA GREENS IS A PROJECT OF ASHIANA HOMES AND THE GREEN TRIVENT DEVELOPER. BOTH HAVE PROVEN TRACK RECORD OF SAFETY OF INVESTMENT.

**Ashiana**  
Homes for every Dream



ASHIANA PALM COURT, NH-58, GHAZIABAD



ASHIANA UPVAN, INDIRAPURAM



ASHIANA GREENS, INDIRAPURAM



ASHIANA ORCHIDS, GREATER NOIDA



BLACK GOLD APT., GREATER NOIDA



ASHIANA LE RESIDENCY, NH-24, GHAZIABAD



ASHIANA SILVER CREST, GURGAON



VILLA ANANDAM, NH-58, GHAZIABAD



CLASSIC PERSONAL FLOOR, GURGAON



ROYAL LAGOON, BHUBANESWAR

Ashiana Homes has completed 25 glorious years in the housing development sector. It has established its reputation as a real estate developer that provides **quality of construction, safety of investment and integrity of commitment.**

The Group started in late 80's when quality housing was totally unheard of. Since 1997 Ashiana Homes has been focused in Delhi/National Capital Region (NCR). It has built over 33 lacs sq.ft. of residential and commercial space and has put a smile on the faces of more than 3,000 families who reside in various projects at Indirapuram, Greater Noida, Ghaziabad and Gurgaon. Expanding its national footprint, Ashiana Homes is now in Jaipur and Bhubaneswar.

**Some of Ashiana Homes' completed residential projects are:**

- ASHIANA GREENS – INDIRAPURAM
- ASHIANA UPVAN – INDIRAPURAM
- ASHIANA ORCHIDS – GREATER NOIDA
- BLACK GOLD APT. – GREATER NOIDA
- ASHIANA HERITAGE – GHAZIABAD
- ASHIANA PALM COURT – GHAZIABAD
- ASHIANA LE RESIDENCY – GHAZIABAD
- CLASSIC PERSONAL FLOORS – GURGAON
- ASHIANA SILVER CREST – GURGAON



*When it comes to Jaipur nobody knows it better than the The Grreen Triveni Developer. The Group understands the region, and its expertise in real estate investment is well known. The Group works with a single minded philosophy of 'Creating value for all its stakeholders.'*

*The Grreen Triveni Developer has always strived to develop products and services that match the expectations of its customers. The aim is to create spaces that enable you to get the best of what life has to offer.*

*We create spaces that are of unparalled quality and reflects timelessness. And believe in our team of dedicated professionals who have made it possible.*







ASHIANA GREENS IS CONVENIENTLY LOCATED ON  
**SIKAR ROAD, JAIPUR**  
 JUST A SHORT DRIVE FROM VIDHYADHAR NAGAR

DISTANCES FROM ASHIANA GREENS	
AAPNO RAJASTHAN	3 KM
VISHWAKARMA IND. AREA (VKI)	7 KM
VIDHYADHAR NAGAR & S.K. SONI HOSPITAL	9 KM
VAISHALI NAGAR	15 KM
JAIPUR RAILWAY STATION	15 KM
Approximate Distances	



Map not to scale, indicative only



# LAYOUT PLANS

## FEATURES & SPECIFICATIONS



Ashiana GREENS

PROJECT BY

GRREEN TRIVENI

Ashiana

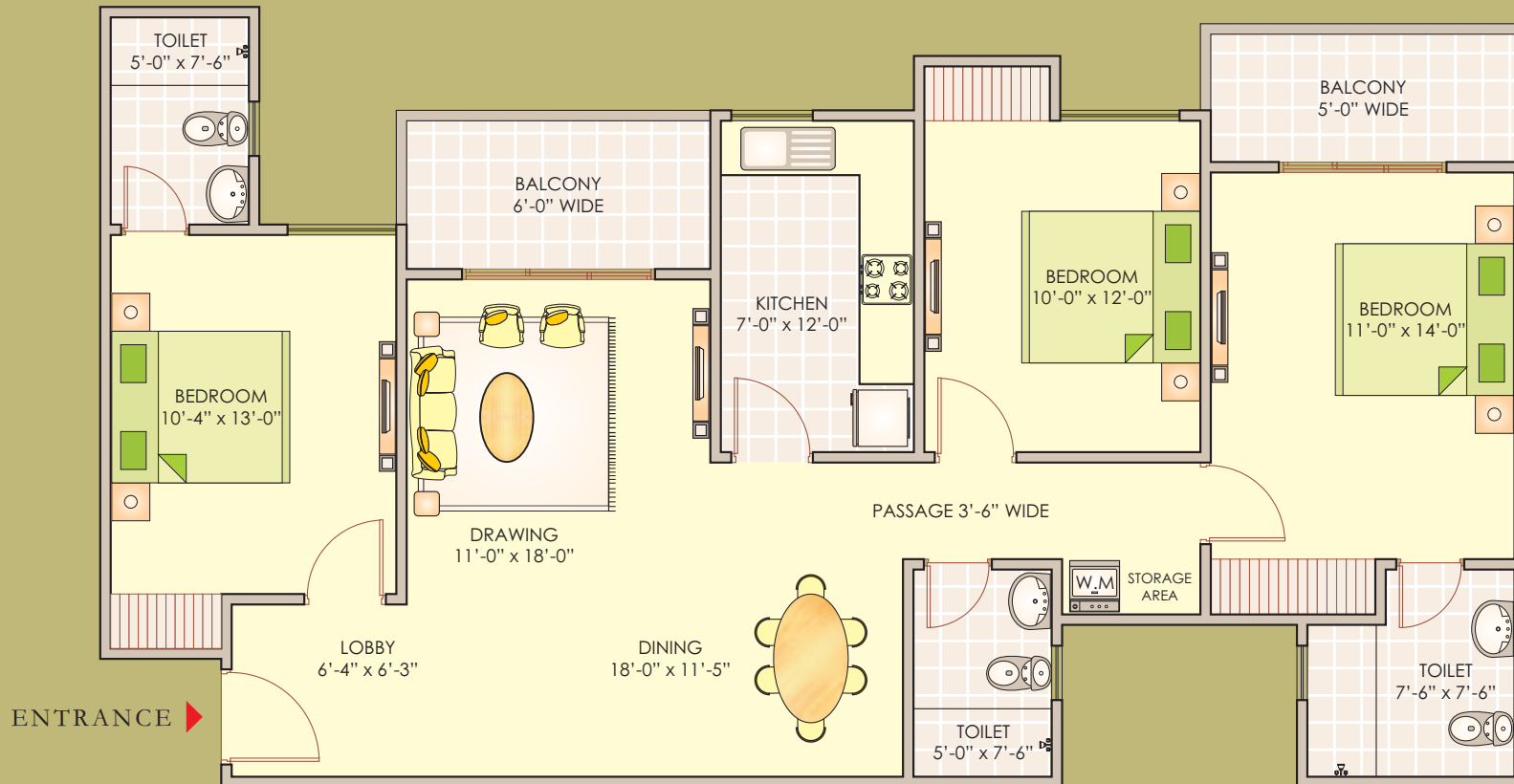




# TYPE-A1

## 3 BEDROOMS + 3 TOILETS

**SUPER AREA: 1600 SQ.FT.**  
**148.69 SQ.M.**



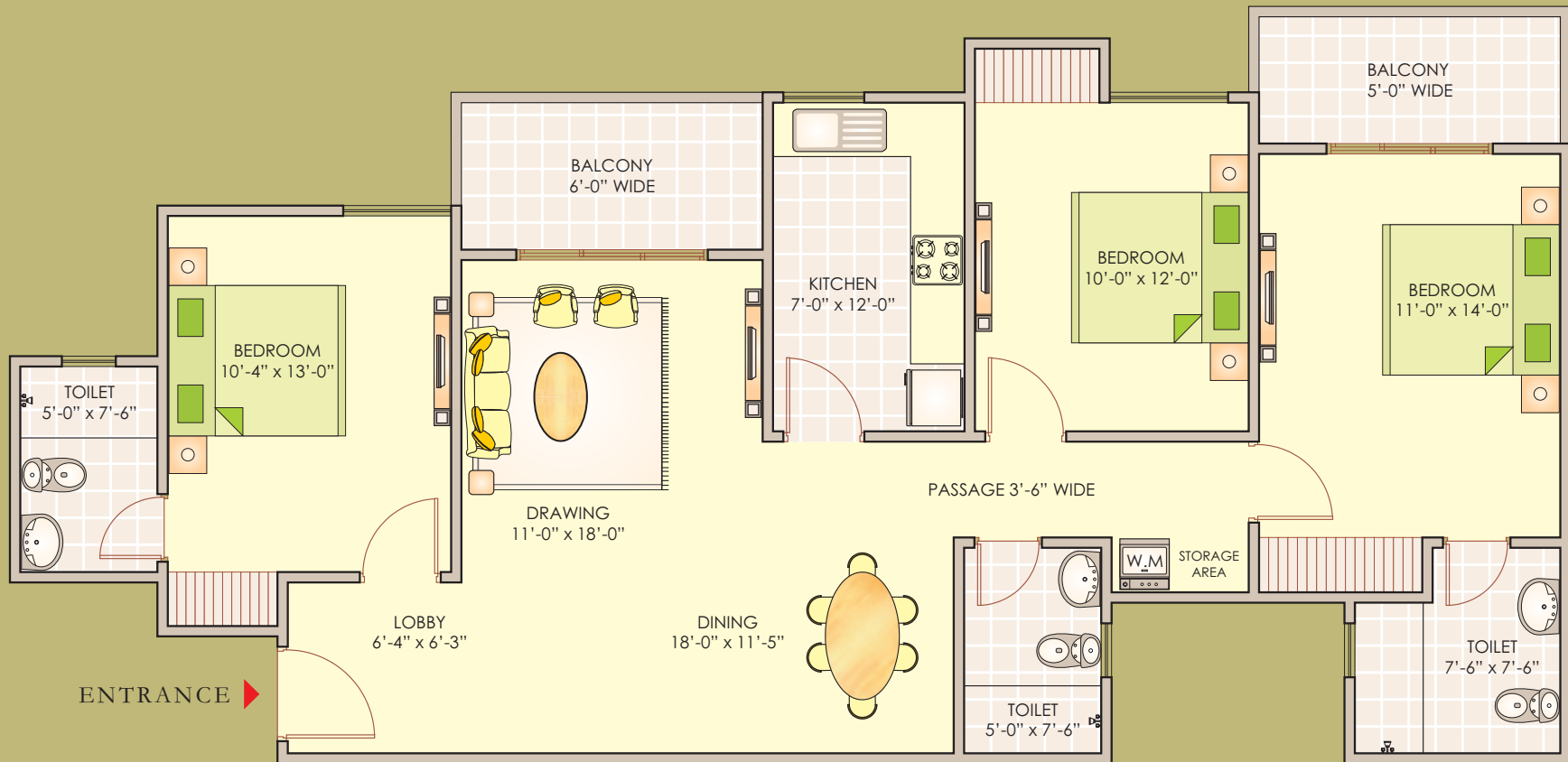
1 SQ.MTR. = 10.76 SQ.FT.  
NOT TO SCALE, INDICATIVE ONLY.



# TYPE-A2

## 3 BEDROOMS + 3 TOILETS

**SUPER AREA: 1600 SQ.FT.**  
**148.69 SQ.M.**



1 SQ.MTR. = 10.76 SQ.FT.  
NOT TO SCALE, INDICATIVE ONLY.





# TYPE-A3

## 3 BEDROOMS + 3 TOILETS

**SUPER AREA: 1600 SQ.FT.**

**148.69 SQ.M.**



ENTRANCE

1 SQ.MTR. = 10.76 SQ.FT.  
NOT TO SCALE, INDICATIVE ONLY.



# TYPE-B1

## 2 BEDROOMS + 2 TOILETS

**SUPER AREA: 1250 SQ.FT.**  
**116.17 SQ.M.**



ENTRANCE

1 SQ.MTR. = 10.76 SQ.FT.  
NOT TO SCALE, INDICATIVE ONLY.



# APARTMENT SPECIFICATIONS

STRUCTURE		EARTHQUAKE RESISTANT RCC FRAMED STRUCTURE
	TREATMENT	ANTI-TERMITE TREATMENT DURING VARIOUS STAGES OF CONSTRUCTION
WALL FINISH	INTERNAL	PLASTER, PUTTY & ACRYLIC OIL BOUND DISTEMPER (OBD) IN PASTEL COLOUR. CEILING-WHITE OBD
	EXTERNAL	TEXTURE PAINT
FLOORING	DRAWING/DINING	VITRIFIED TILES
	MASTER BEDROOM	LAMINATED WOODEN FLOORING/VITRIFIED TILES
	OTHER BEDROOMS	VITRIFIED TILES
	BALCONIES	CERAMIC TILES
	STAIRCASE	CERAMIC TILES/KOTA STONE OR EQUIVALENT FLOORING
TOILET	WALLS	CERAMIC TILES UP TO 7 FEET HEIGHT
	FLOORING	ANTI-SKID CERAMIC FLOOR TILES
	FITTINGS	HOT & COLD WATER SUPPLY PIPE LINE WITH CP FITTINGS OF REPUTED MAKE. MIRROR & TOWEL RAIL SHALL BE PROVIDED
	SANITARYWARE	WHITE/PASTEL COLOUR VITREOUS CERAMIC SANITARYWARE OF REPUTED MAKE
KITCHEN	PLATFORM	WORKING PLATFORM WITH BLACK GRANITE COUNTER WITH STAINLESS STEEL SINK AND DRAIN BOARD
	WALL	2 FEET CERAMIC TILES DADO ABOVE WORKING PLATFORM
	FLOORING	ANTI-SKID CERAMIC TILES
	FITTINGS	HOT & COLD WATER SUPPLY PIPE LINE WITH CP FITTINGS OF REPUTED MAKE
WINDOWS	FRAME & SHUTTER	POWDER COATED ALUMINIUM WINDOW FRAMES & SHUTTERS WITH GLAZING
DOORS	INTERNAL DOORS	MOULDED SKIN DOOR SHUTTERS PAINTED IN 2 COATS OF SYNTHETIC ENAMEL PAINT ALL FRAMES OF HARD WOOD DULY PAINTED  FLUSH DOOR/INTERNAL BEDROOM DOORS SHALL HAVE MORTICE LOCKS & STANDARD ALUMINIUM HARDWARE
WATER SUPPLY		FILTERED WATER SUPPLY THROUGH CENTRALIZED WATER FILTRATION PLANT
POWER BACKUP		1 KW* IN 2 & 3 BEDROOM APARTMENTS. COMMON AREAS INCLUDING ONE LIFT IN EACH BUILDING
ELECTRICAL		<ul style="list-style-type: none"> <li>• ADEQUATE LIGHT POINTS &amp; POWER POINTS IN ALL ROOMS, TOILETS &amp; KITCHEN</li> <li>• COPPER WIRING OF REPUTED BRAND IN CONCEALED PVC CONDUITS</li> <li>• REPUTED MODULAR SWITCHES FOR LIGHT &amp; POWER POINTS</li> <li>• TV AND TELEPHONE POINTS IN ALL BEDROOMS &amp; DRAWING/DINNING</li> <li>• PROVISION FOR INTERNET FACILITY IN ALL THE ROOMS</li> <li>• PROVISION FOR GEYSER POINTS IN ALL THE TOILETS AND KITCHEN</li> <li>• PROVISION FOR REFRIGERATOR AND AQUAGUARD POINTS IN THE KITCHEN</li> <li>• DISTRIBUTION BOARD WITH MCB'S OF REPUTED MAKE</li> </ul>

\* ON EXTRA COST

NOTE : 1) COLOR & DESIGN OF TILES MAY CHANGE SUBJECT TO AVAILABILITY AND DISCRETION OF THE DEVELOPER.

2) VARIATION IN COLORS/TEXTURE OF VITRIFIED & CERAMIC TILES, WOOD/WOODEN PRODUCTS MAY OCCUR.

3) DEVELOPER / COMPETENT AUTHORITY RESERVES THE RIGHT TO MODIFY / ALTER THE SPECIFICATION FOR THE BETTERMENT OF THE PROJECT.

## FEATURES & FACILITIES WITHIN THE COMPLEX

GATED RESIDENTIAL COMPLEX BOUNDED FROM ALL FOUR SIDES FOR SAFETY & SECURITY OF THE RESIDENTS

WIDE LANDSCAPE GREENS SPREAD ALL AROUND WITH PLAY EQUIPMENT FOR CHILDREN

POWER BACK-UP FACILITY WITHIN THE APARTMENT & COMMON AREA

MONTHLY RUNNING COST OF THE BACK-UP POWER SHALL BE PAYABLE EXTRA

MULTI LEVEL SECURITY SYSTEM

INTERCOM FACILITY FOR EACH APARTMENT

FILTERED DRINKING WATER SUPPLY

OPEN AIR AMPITHEATRE

JOGGING TRACK

SEWAGE TREATMENT PLANT

RAIN WATER HARVESTING

UNDERGROUND ELECTRICAL CABLING AND DRAINAGE SYSTEM

IN HOUSE AMBULANCE SERVICE SHALL BE PROVIDED FOR EMERGENCY USE

DEDICATED PARKING AREA FOR RESIDENTS & VISITORS

## CLUB & GAMING FACILITY

SWIMMING POOL WITH KIDS SPLASH POOL & SIT OUT DECK AROUND IT

CRICKET PRACTICE NET WITH BOWLING MACHINE

BASKETBALL COURT

SPA WITH-HIS & HER MASSAGE CENTRE & STEAM ROOM

FULLY EQUIPPED GYMNASIUM

INDOOR GAME ROOM, POOL TABLE, TABLE TENNIS, CAROM ETC

DEDICATED PLAY AREA WITH PLAY EQUIPMENT FOR CHILDREN

DEDICATED SENIOR CITIZEN LOUNGE

AIR-CONDITION COMMUNITY HALL EXCLUSIVELY FOR RESIDENTS ONLY FOR SMALL PARTIES & PRIVATE FUNCTION

BUSINESS CENTRE WITH INTERNET & FAX FACILITY





**Ashiana GREENS**

PROJECT BY

**GRREEN TRIVENI** | **Ashiana**

SALES & SITE OFFICE: SIKAR ROAD (NEAR SUN CITY), JAIPUR  
CALL US AT 8824 100 100

[WWW.ASHIANAGREENS.IN](http://WWW.ASHIANAGREENS.IN)

## THE GREEN TRIVENI DEVELOPER

### JAIPUR CITY OFFICE:

306 & 307 CITY PEARL (OPP. HOTEL GANGAUR) KHASA KOTHI CIRCLE,  
M.I. ROAD, JAIPUR 302006 EMAIL: SALES@ASHIANAGREENS.IN

### NEW DELHI OFFICE:

3H, PLAZA M6, DISTT. CENTRE JASOLA NEW DELHI 110 025  
TEL: 011-40564056 FAX: 011-40564040

PROJECT BY

**GRREEN TRIVENI** | **Ashiana**